

COMUNE DI BONEA – PROVINCIA DI BENEVENTO

LAVORI DI ADEGUAMENTO SISMICO DELL'EX SCUOLA MEDIA

(IL PROGETTISTA)

ARCH. SALVATORE IZZO



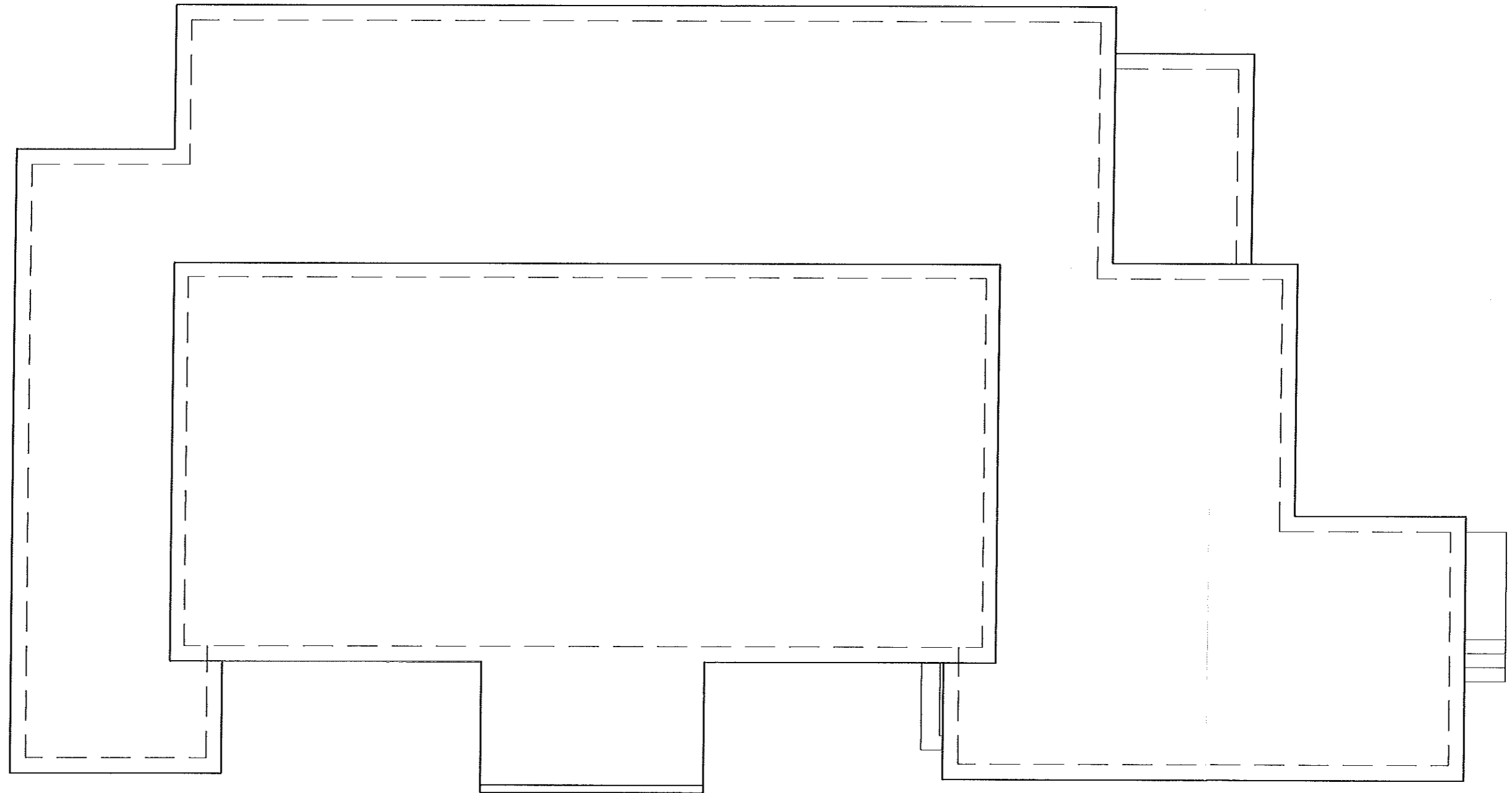
PROGETTO DI FATTIBILITÀ TECNICA ED ECONOMICA

Art.23 comma 6 D.Lgs. 50/16

ELABORATI GRAFICI		Approvazioni
PIANTE PROSPETTI E SEZIONI	Tavola 3.3	
	Scala 1:100	

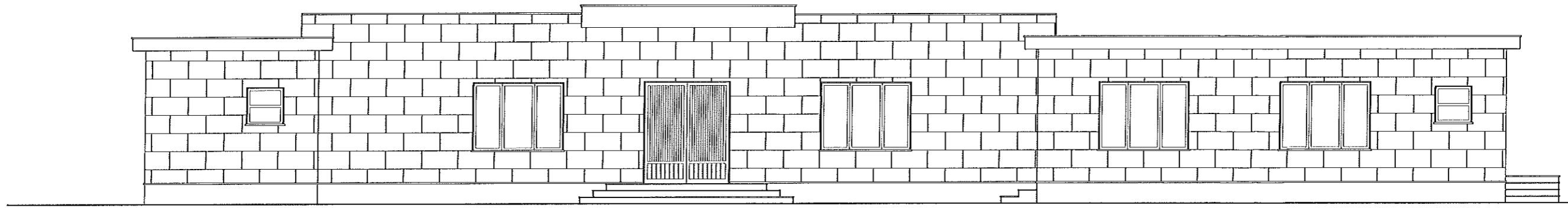


PIANTA COPERTURA



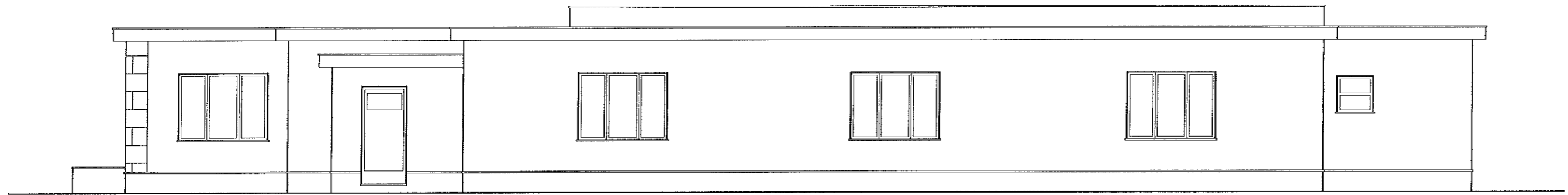
scala 1:100

PROSPETTO PRINCIPALE



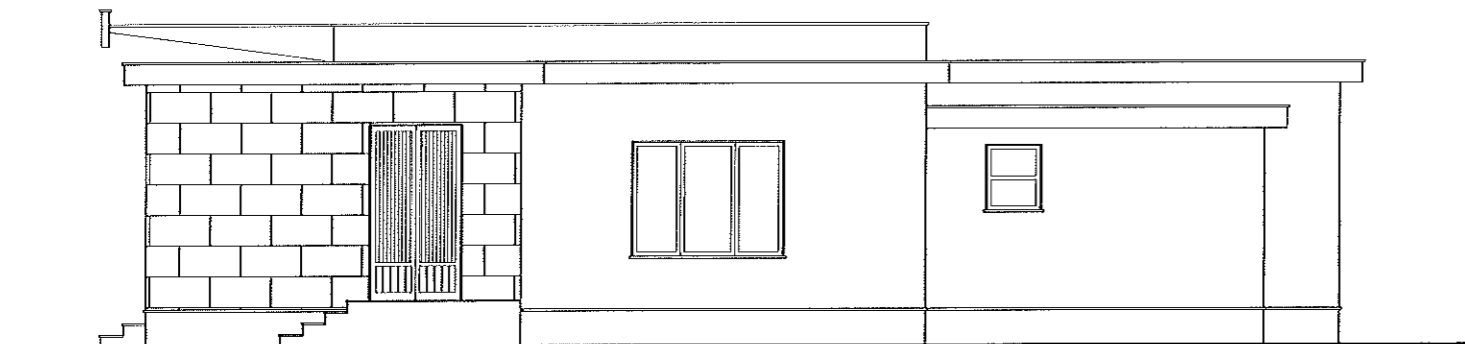
scala 1:100

PROSPETTO POSTERIORE



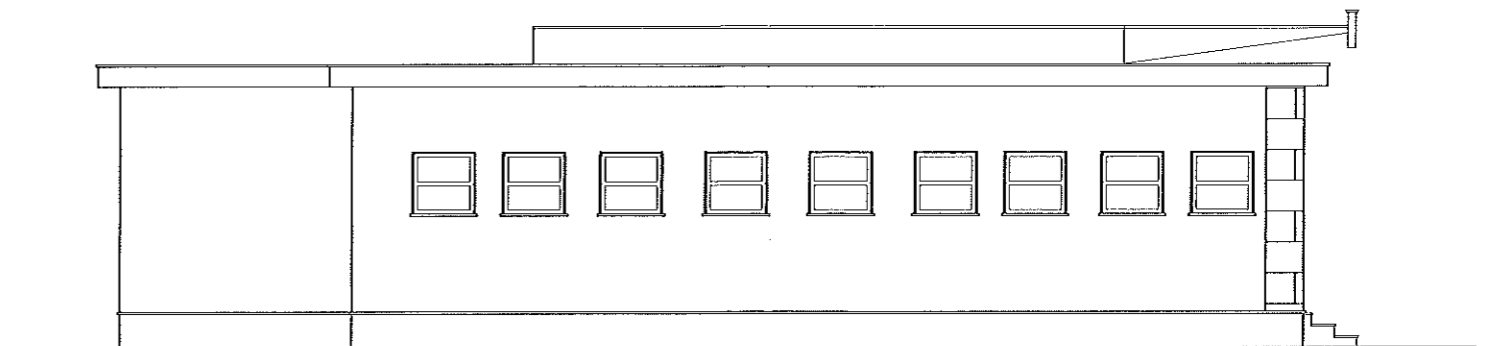
scala 1:100

PROSPETTO LATERALE DX



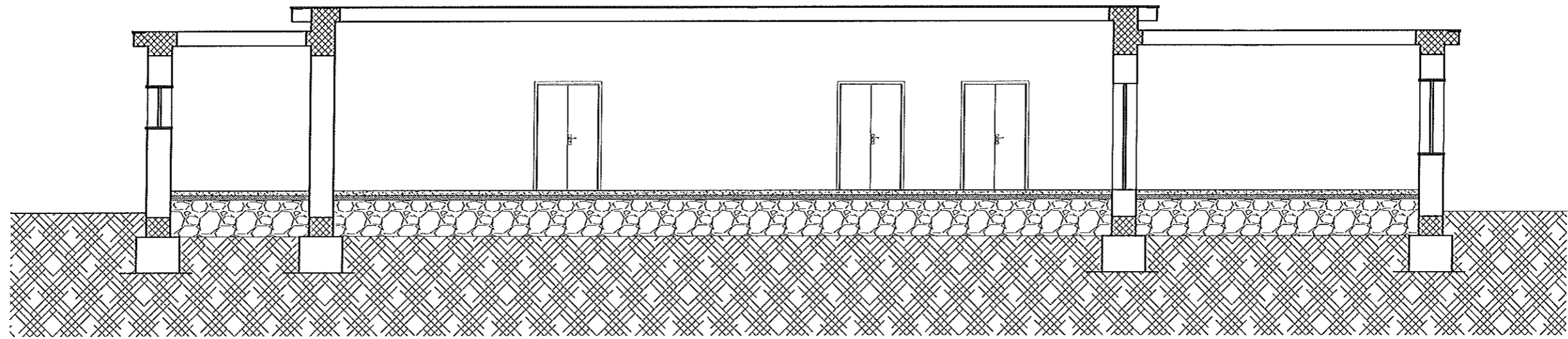
scala 1:100

PROSPETTO LATERALE SX



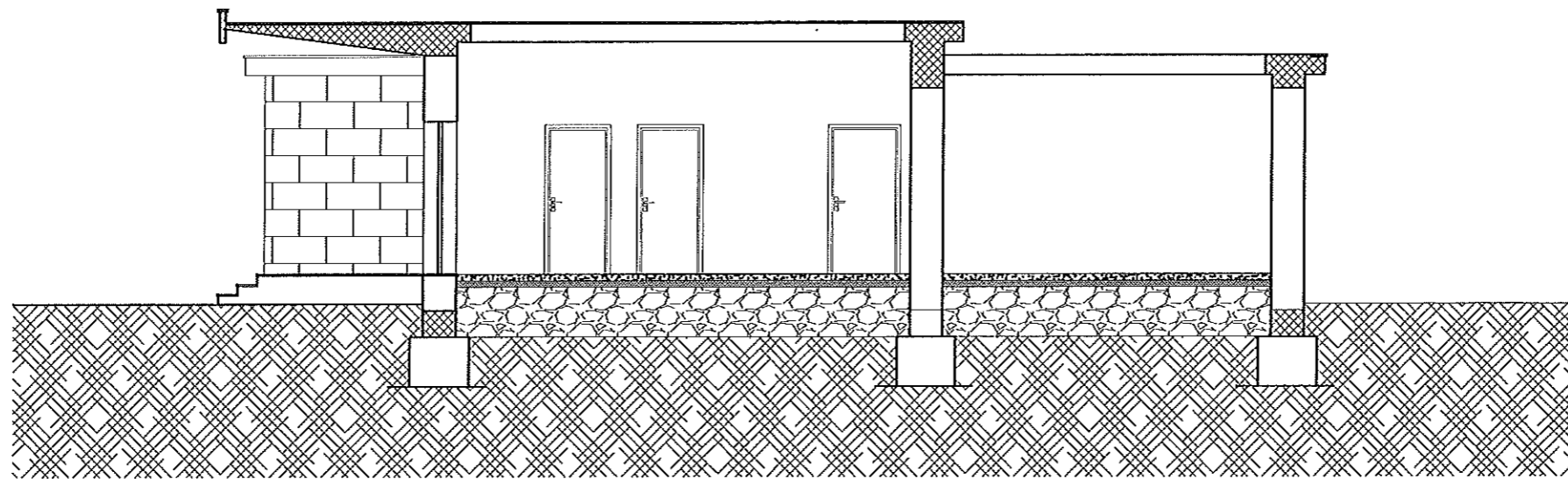
scala 1:100

SEZIONE A - A



scala 1:100

SEZIONE B - B



scala 1:100